



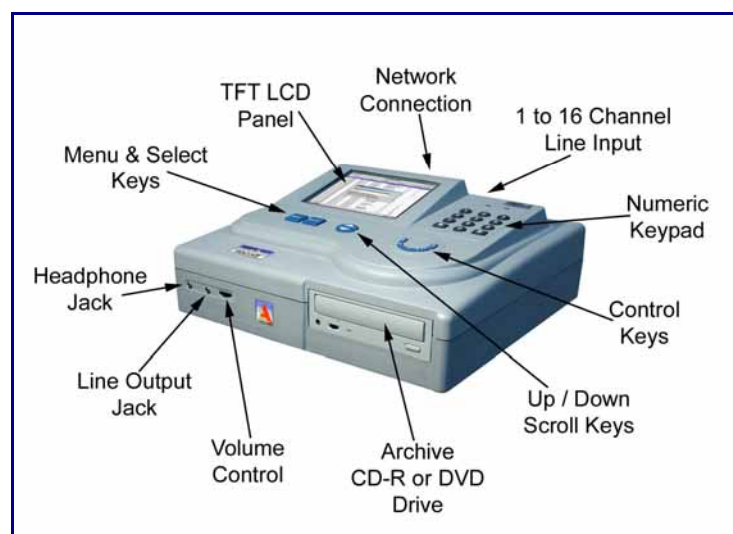
**Total Recall** is a compact, cost-effective and self-contained voice-logging solution, providing secure recording, storage and playback of telephone calls (or any audio signal). Over 10,000 hours of recordings can be stored on an internal database for instant retrieval and playback.

Available in 4-16 channels in a stylish desktop model or 4-32 channels in a functional rack mount model, **Total Recall** will record the telephone numbers of incoming and outgoing calls, and store this information in a database, together with a time/date stamp, the duration of the call and reference to the specific channel number. All these 'fields' can be used to search and retrieve calls from the database.

Calls on the **Total Recall** database can be replayed via an internal speaker, or archived to an internal DVD drive. For additional peace of mind, automatic archiving of calls can be configured at preset intervals. A 'Live Monitoring' function enables the real-time monitoring of calls on selected channels.

**Remote Manager** (the PC client Management Interface) gives easy integration, control and management of your voice recording requirements using your current LAN/WAN/VPN or dialup interface. **Remote Manager** gives you the flexibility to search and monitor calls on **Total Recall** units, configure channel and unit settings, and expand your voice recording capability to multiple recorders on multiple sites, or simply expand your current capability beyond 32 channels.

**Record on Demand** provides optional end user controls over what calls are recorded, as well as the ability to add notes to a current call, all from a users PC and existing LAN connection.



*Total Recall*. View, showing function keys and peripheral connections

## User Interface Overview

**Total Recall** is easy to configure and operate, using intuitive navigation through User Menus, and a contact keypad for selecting or confirming an instruction.

There are only four navigation keys:

**MENU** – this key is used to step through the three menus.

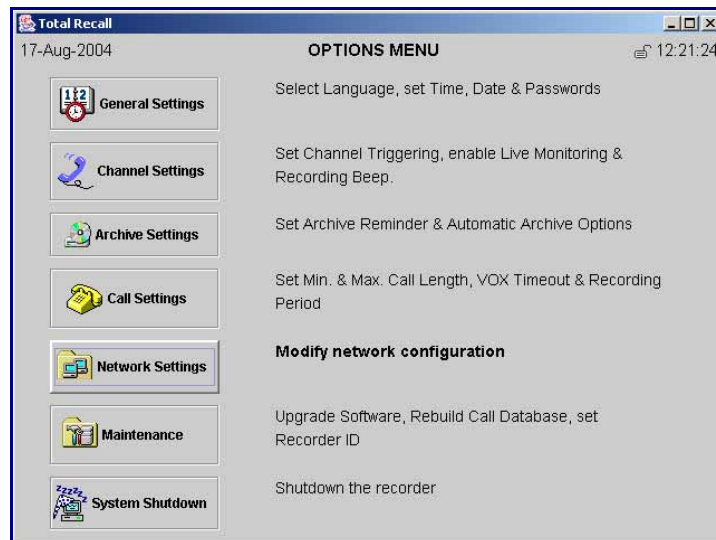
**SELECT** – once the highlight bar has been placed over an area, this key either toggles through pre-selected values or it enables a value to be entered via the numeric keypad.

**UP /DOWN ARROW** – these 2 keys move the cursor or highlight bar up or down the selected menu.

There are only three user selectable menus:

### Options Menu

Used for system configuration, system maintenance and system shutdown.

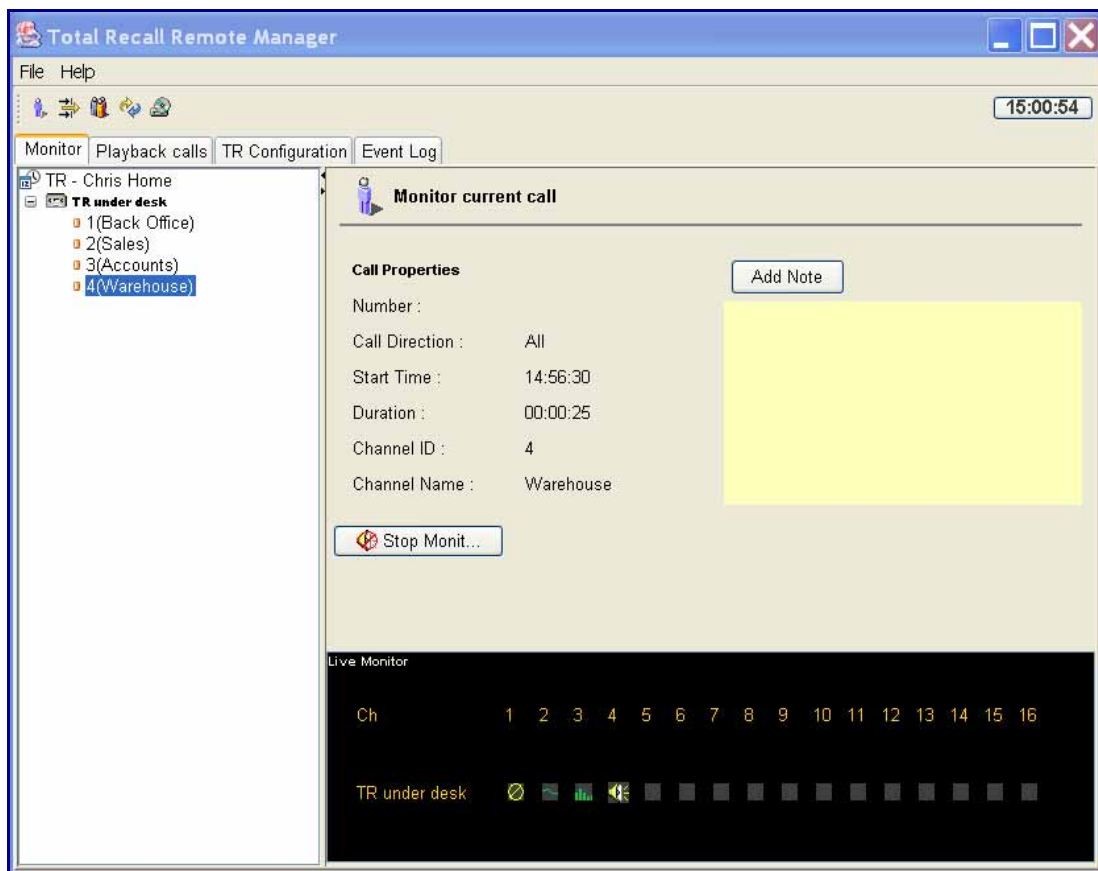




## Product Description Remote Manager

Rev:4.34

**Remote Manager** is client software included with **Total Recall** to allow calls to be replayed and monitored on any multimedia PC running Windows 95/98/NT/ME/2000/XP. **Remote Manager** is used to access **Total Recalls** over your network or dialup and replays calls from archived media. With **Remote Manager** you can listen to conversations live, search and replay calls direct from the **Total Recall** database and manage the configuration of one or multiple **Total Recall** units connected via LAN or Dialup. Search for conversations by time, date, extension or line number, caller ID, channel Number or note keyword.



**Product Description**  
**Record On Demand**

Rev:4.34

**Record on Demand** is an optional license free software application that provides additional real-time functionality to **Total Recall** end users. Utilising the existing LAN connection, users can control what calls on their line are recorded or not recorded, as well as having the ability to add notes to a current call – all from a simple “point and click” interface on the users PC.

To ensure the security of **Total Recall**, network administrators have the flexibility to tailor the users level of control with **Record on Demand** through specific unit settings, or through their **Remote Manager** software.